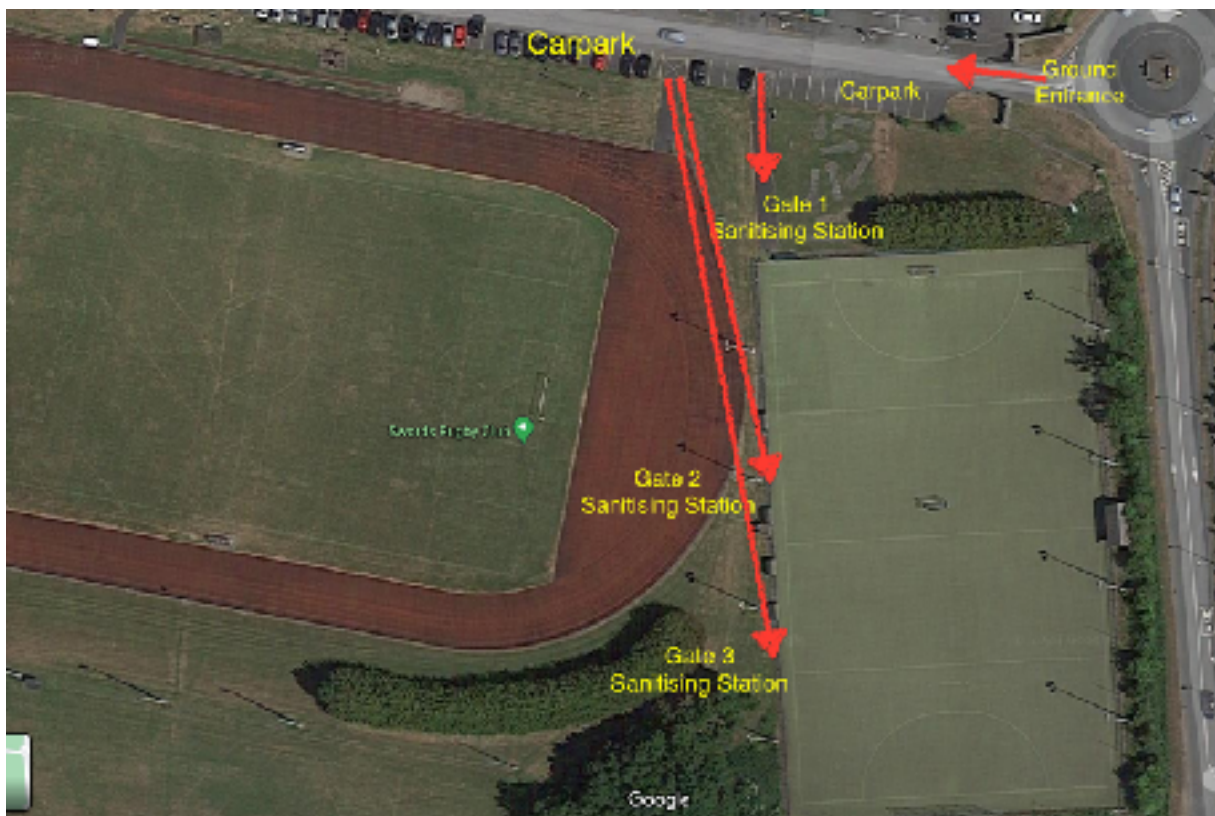


Hi All,

We are delighted that you have registered your son/daughter for the forthcoming season. The action kicks off this Sunday the 18th of October in ALLSA, <https://goo.gl/maps/d6WwBidaTjdCokhb9>.

It is important that all protocols are followed correctly.

There are 3 entrance points to the pitch in ALLSA each group will have a designated entrance/exit point.



Gate 1 is the Gate nearest the Car Park.



Gate 2 is at the half way line of the pitch.



Gate 3 is at the far end of the hockey pitch, furthest away from the carpark. (We have been assured the foliage will be tidied up before Sunday)



Before arriving at the pitch the Health Declaration Form must be filled in at least 30 minutes beforehand for each individual participant. Entrance to the pitch will not be allowed without this form being completed.

See link to health declaration form (This will also be in the What's app group description)

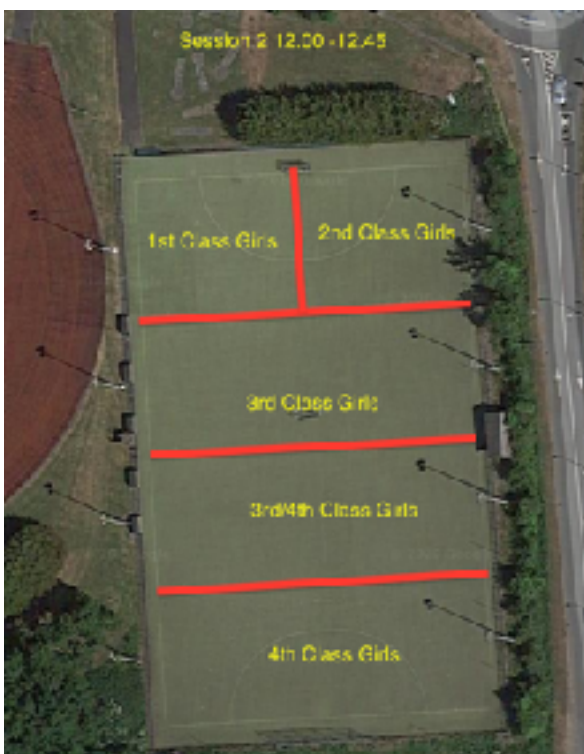
<https://covid.oqlist.co.uk/register/intro?clubname=Clontarf%20HC>

Please see below the entrance/exit points for each age group as well as the pitch location that each Pod will be training on.

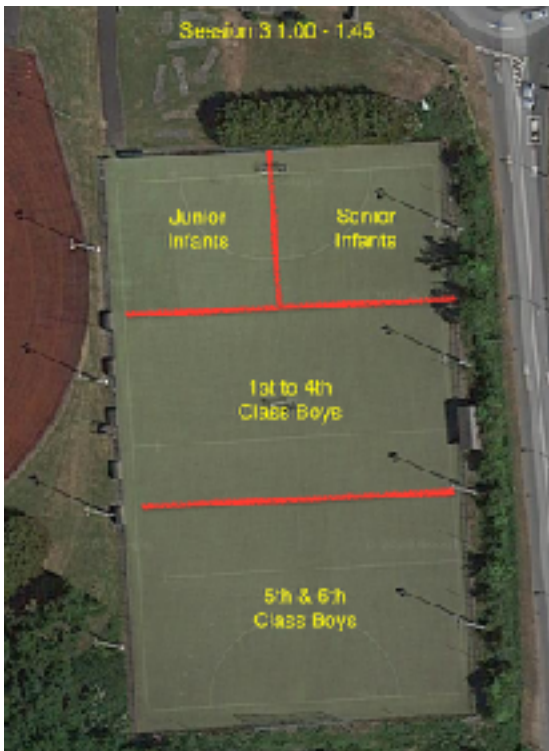
Session 1	Group Entering via Gate 1	Group Entering via Gate 2
11:00-11:45	5th Class Girls	6th Class Girls



Session 1	Group Entering via Gate 1	Group Entering via Gate 2	Group Entering via Gate 3
12:00-12:45	1st & 2nd Class Girls	3rd Class Girls	4th Class Girls



Session 1	Group Entering via Gate 1	Group Entering via Gate 2	Group Entering via Gate 3
1.00 - 1.45	Junior & Senior Infants	1st to 4th Class Boys	5th & 6th Class Boys



Equipment

All participants must have their own gum shield, shin pads and hockey stick at each session. Hockey sticks should be clearly labelled with the owner's name. Participants must have shin pads on prior to entering the pitch area. No kit bags will be permitted in the pitch area. Water bottles are encouraged but again must be clearly labeled with the participants name.

Toilets

There are toilet facilities available in Alssa, these are used for by various clubs and are approximately 200 meters from the pitch. Please ensure your child/children have gone to the toilet before arriving in Alssa. Parents/Guardians must accompany their own child to the toilet if needed.

Health and Safety

We would encourage all parents/guardians to wear a face mask when dropping off your child and collecting them at the end of the session. Watching the session from the side of the pitch is not permitted. A parent/guardian must remain within the grounds of ALLSA for the entirety of the training session.

Regards

Gareth Borland

Director of Youth Development - Clontarf Hockey Club